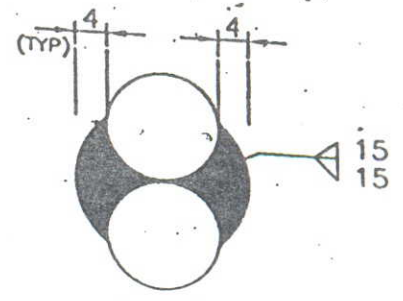
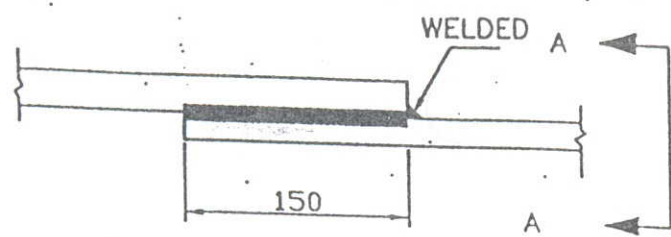


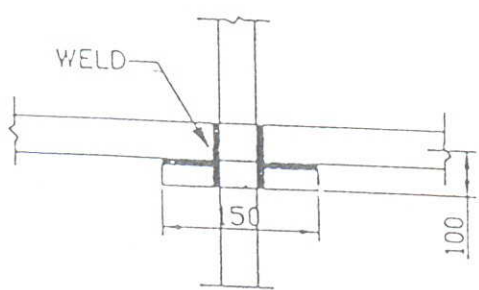
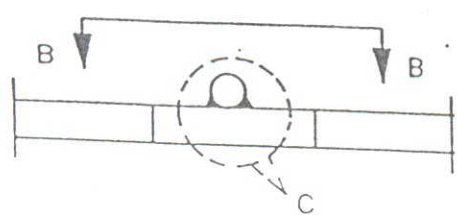
ROD TO ROD

1. STRAIGHT LAP JOINT/RISER

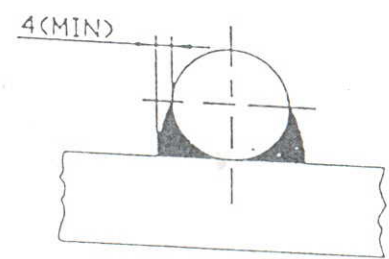


VIEW A-A

2. RIGHT ANGLED JOINT

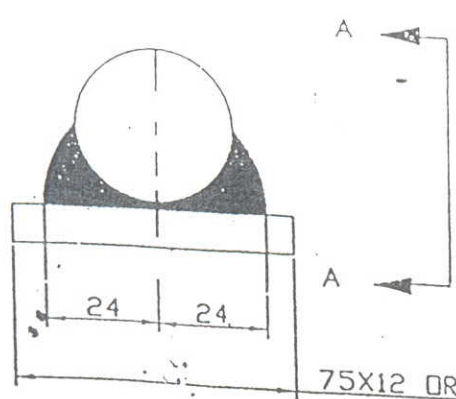


VIEW B-B

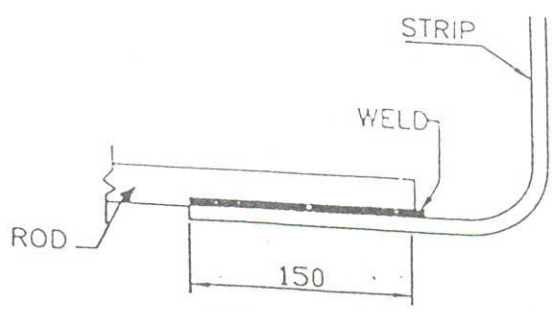


VIEW C

3. ROD TO STRIP



75X12 OR 50X6 GI FLAT



VIEW A-A



EQUIPMENT EARTHING DETAILS

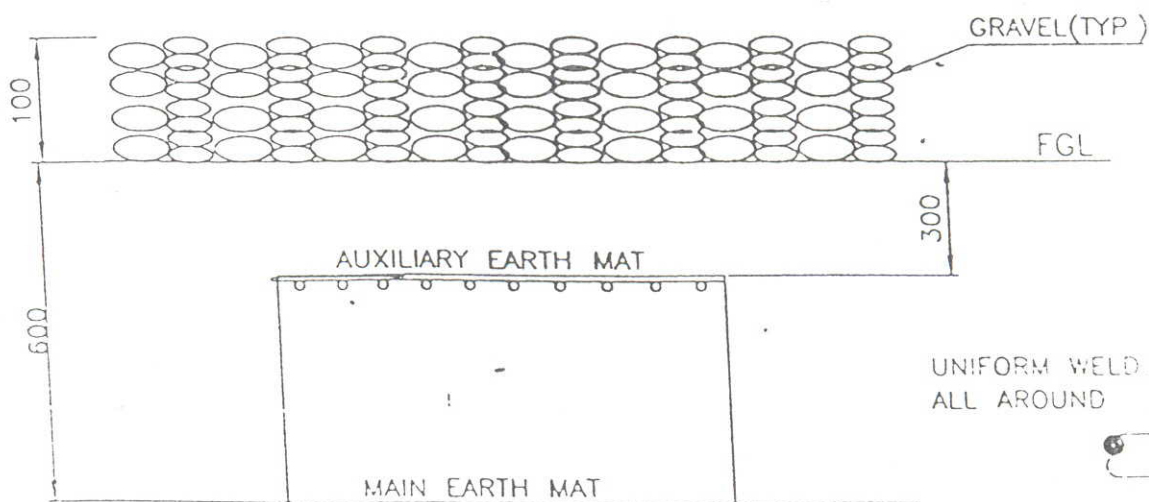
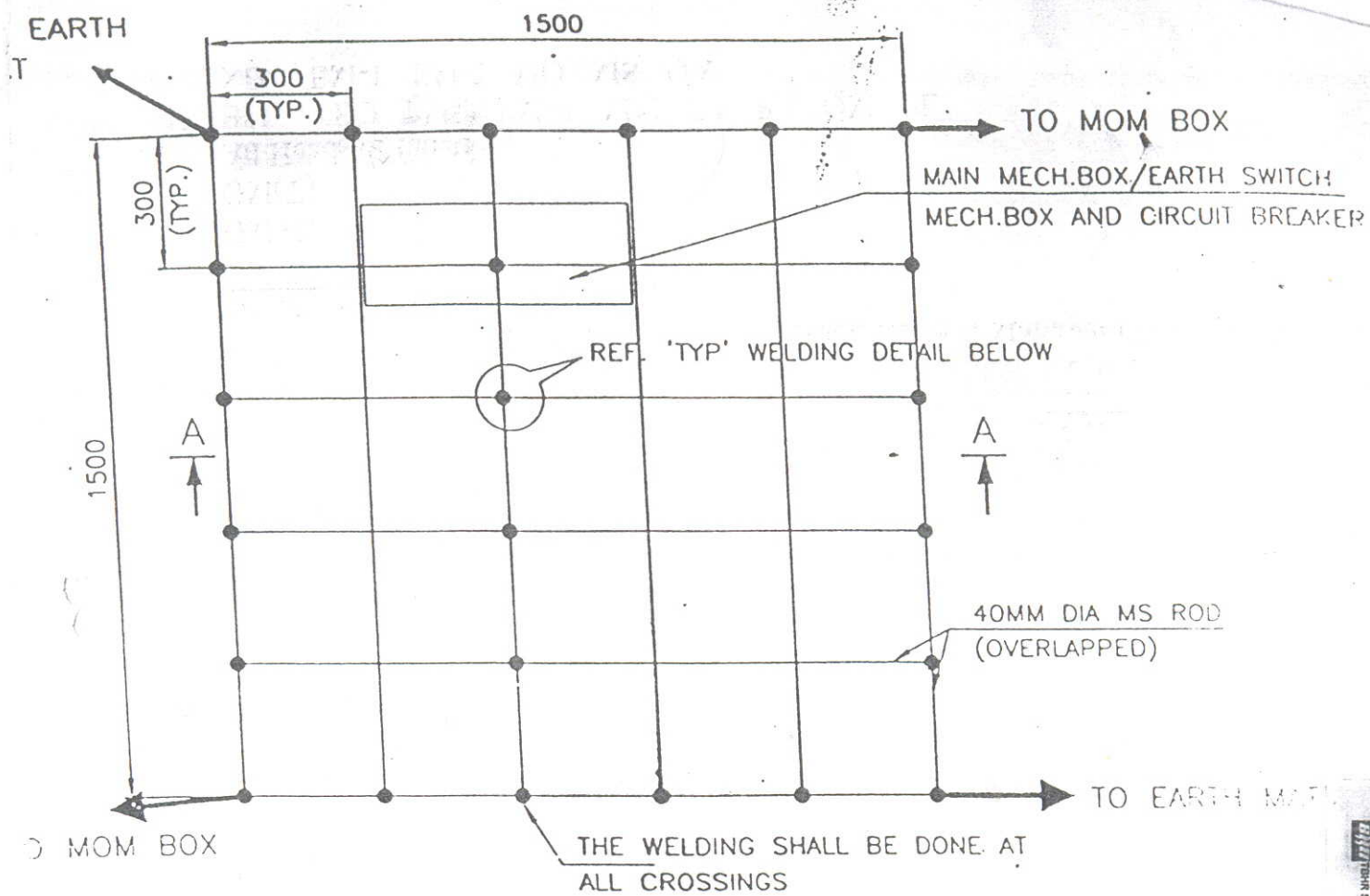
DRG No.

DRG No.

TB-STD-316-Rod Welding

REV. 00

SHEET No. 00



UNIFORM WELD ALL AROUND



SECTION AA

NOTE:

AUX. EARTH MAT SHALL BE SO POSITIONED THAT THE FOOT OF THE OPERATOR ALWAYS LIE OVER THE AUX. EARTH MAT AREA WHILE ATTENDING / OPERATING THE MECH. BOX THE CABLE TRENCH ROUTING SHALL BE PLANNED ACCORDINGLY.



CCMPU. DRC. REF.

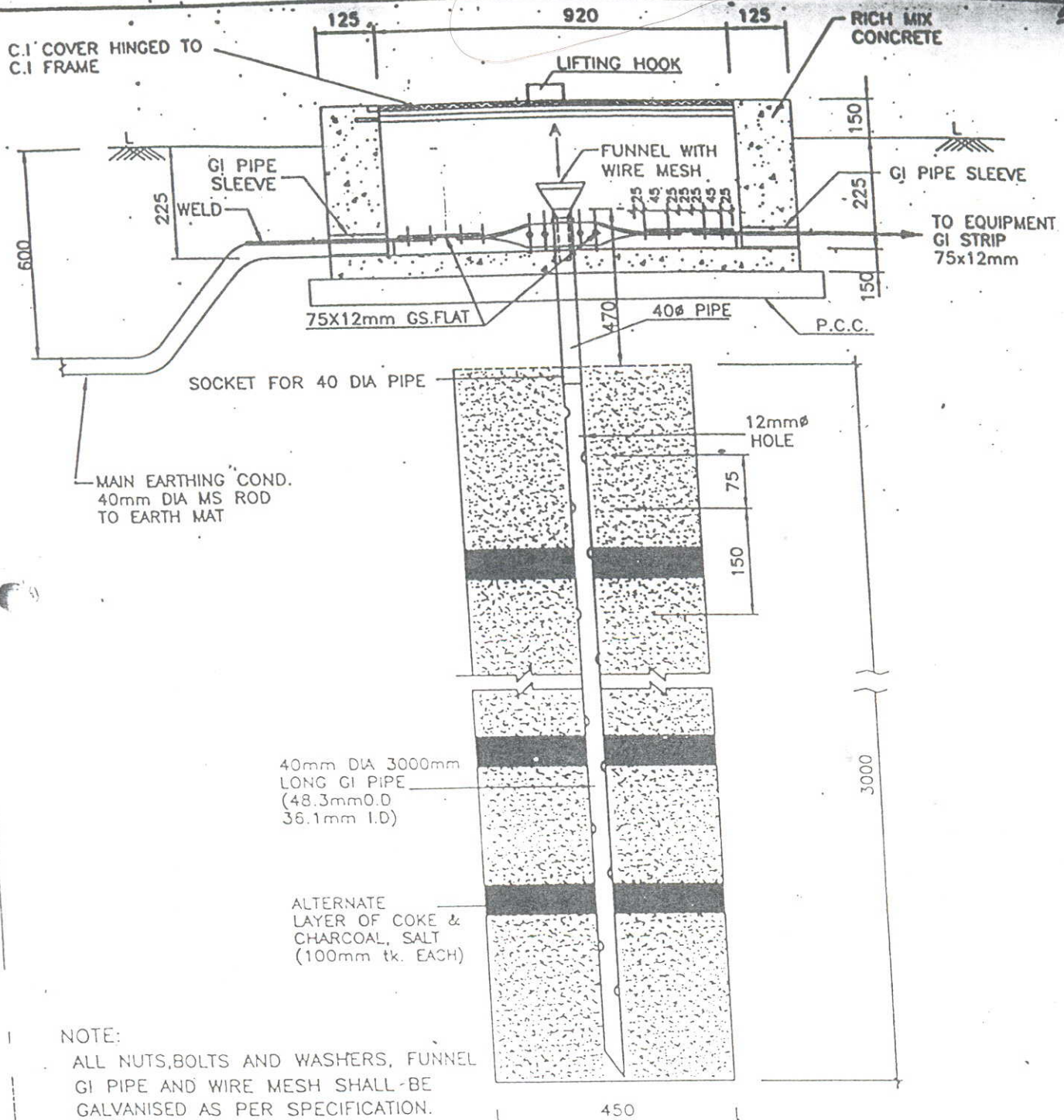
Report No

EQUIPMENT EARTHING DETAILS

AUXILIARY EARTH MAT FOR ISOLATOR MAIN MECH. E/S  
MECH. BOX & CB (TYP.)

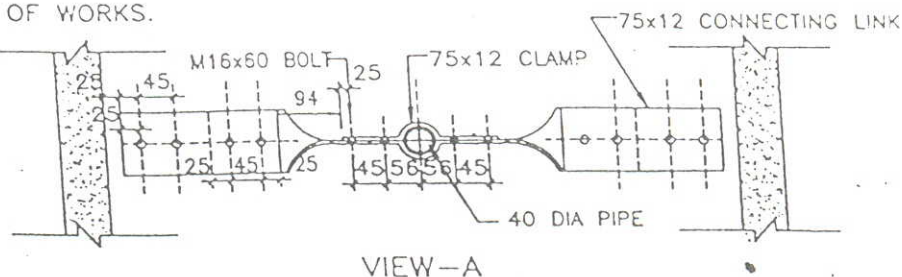
TB-STD-316-Auxiliary Mat.





**NOTE:**

1. ALL NUTS, BOLTS AND WASHERS, FUNNEL GI PIPE AND WIRE MESH SHALL BE GALVANISED AS PER SPECIFICATION.
2. PIPE SLEEVE ENDS SHALL BE SEALED AFTER COMPLETION OF WORKS.
3. FUNNEL SHALL BE SECURELY HELD TO THE PIPE.



**EQUIPMENT-EARTHING DETAILS  
DETAILS OF PIPE EARTH ELECTRODE  
IN TREATED EARTH PIT (ET)**

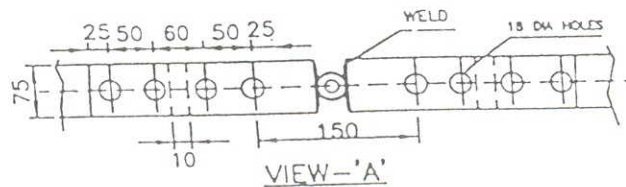
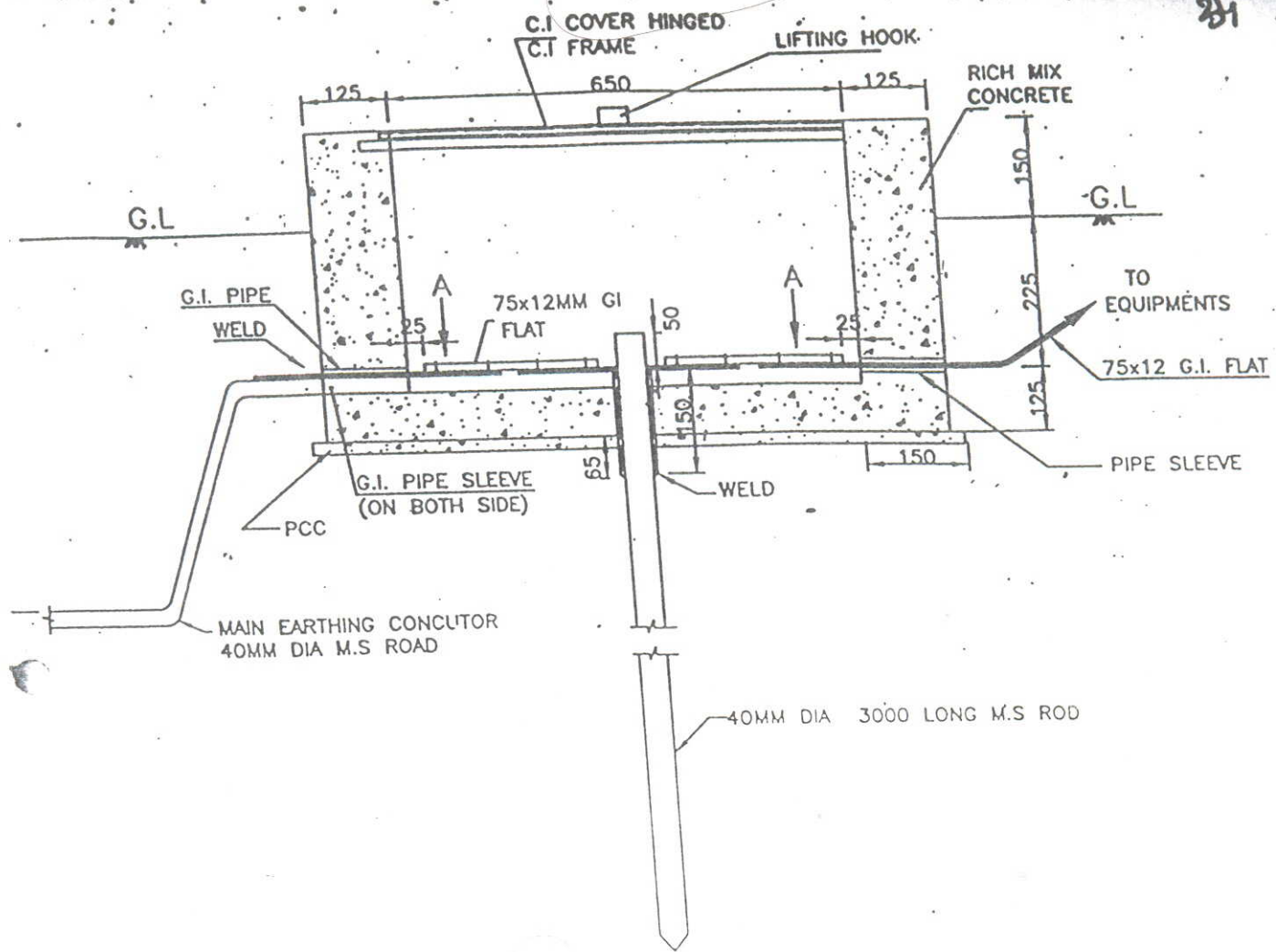
COMPUTER REF. NO.

DRG. No.

TB-STD-316-PIPE Electrode

REV. 00

SHEET No. 00



#### NOTES:-

1. SUPPLY OF FIXING BOLTS NUTS & WASHERS FOR GI FLAT EARTHING CONDUCTOR IS ALSO FORMS PART OF THE SCOPE.
2. TO BE USED FOR CONNECTING DOWN CONDUCTOR OF LIGHTNING PROTECTION SYSTEM.
3. PIPE SLEEVE ENDS SHALL BE SEALED AFTER COMPRETION OF WORK.



## EQUIPMENT EARTHING DETAILS ROD EARTH ELECTRODE WITH TEST PIT

OMPU: DRG. REF. 2

DRG. No.

TB-STD-316-ROD ELECTRODE

REV. 00

SHEET No.

00